

Title: Delivery of research data to Rigsarkivet Appendix

Version: 1.0

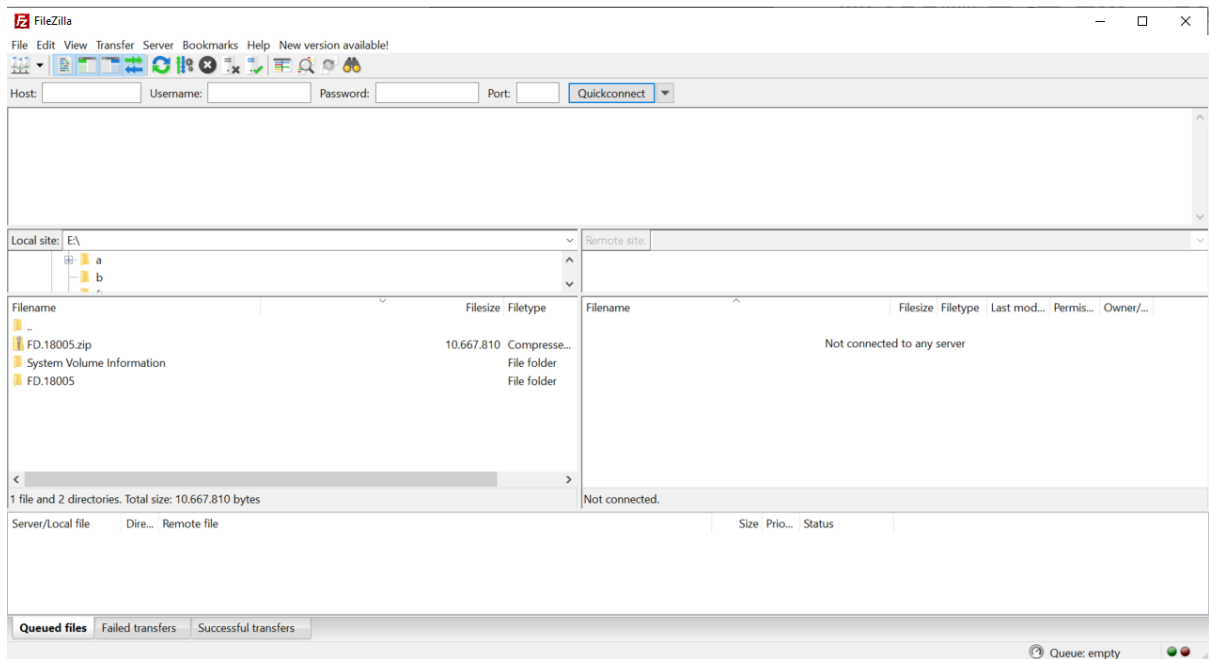
Udgivet: September 2023

Appendix 1: Use of FileZilla

This procedure assumes you are using a Windows personal computer.

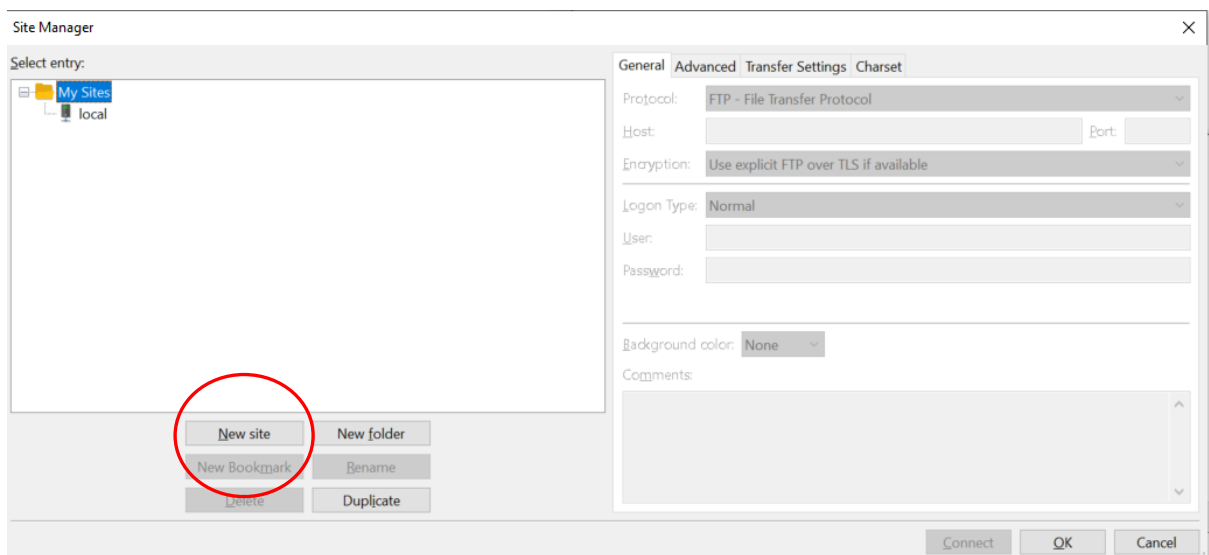
Firstly, click the windows start graphical interface at the bottom left hand of the screen.

Type in “FileZilla” and start a “FileZilla app”.



Enter Ctrl +S to start the Site Manger

Click “New Site”



Rename the Site to “Rigsarkivet”

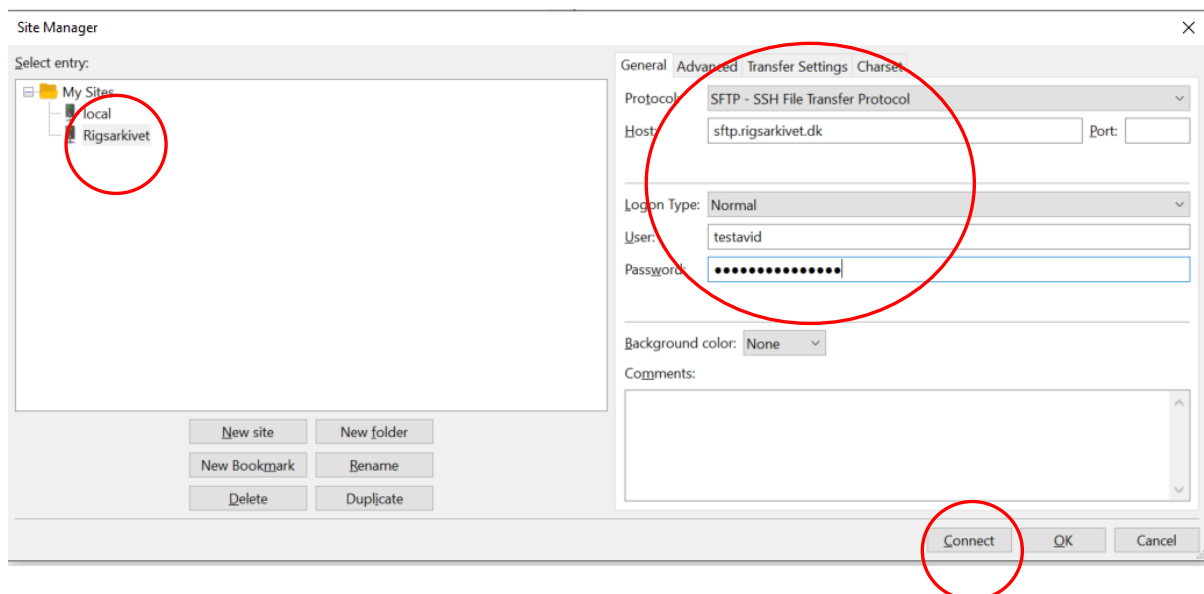
Choose the Protocol “SFTP – SSH File transfer Protocol”

Enter the hostname “sftp.rigsarkivet.dk”

Enter the username you have been provided. In this case “testavid”

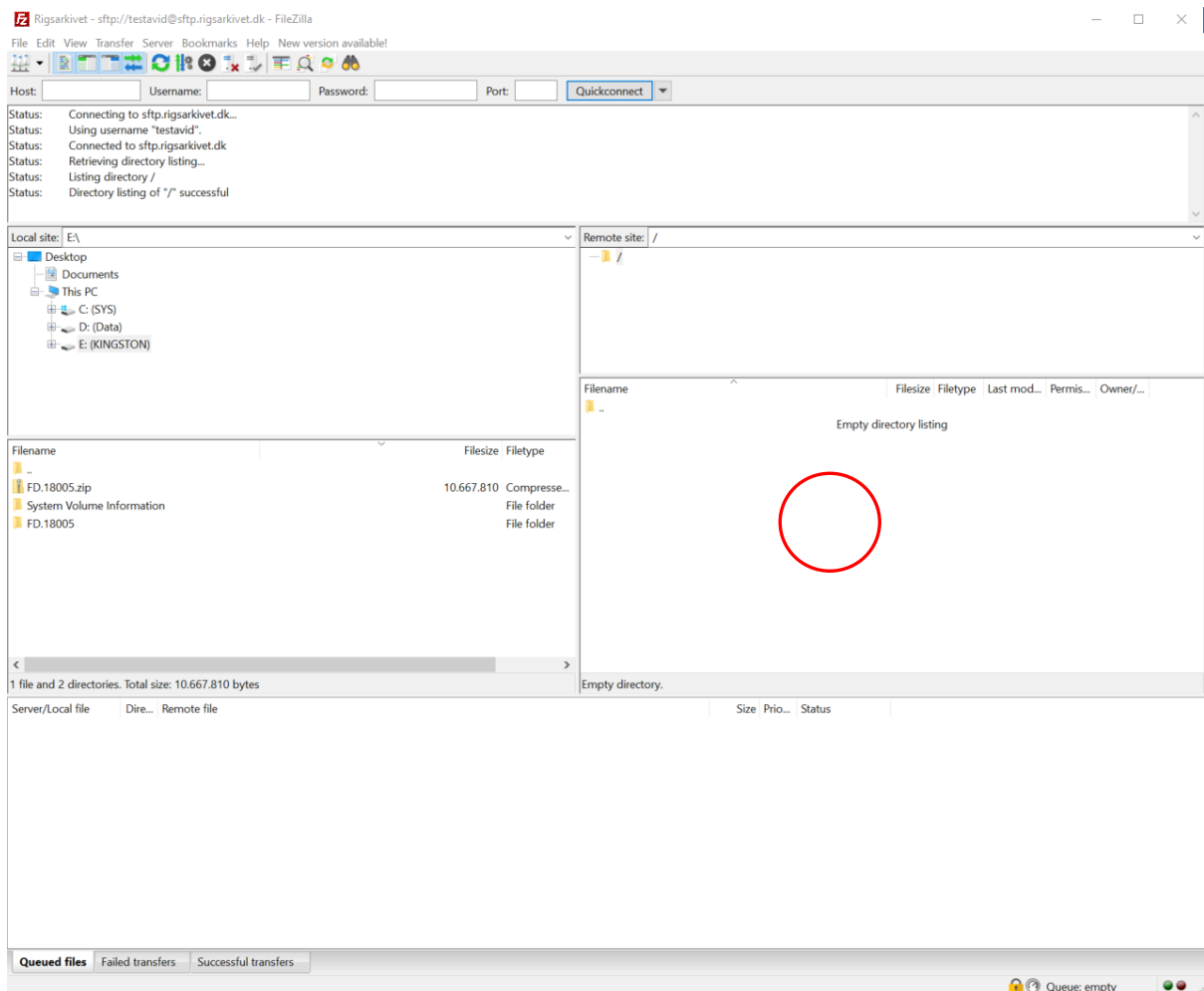
Enter the password you have been provided

Click the “Connect” button to make the connection



The connection will be made and the directories available displayed

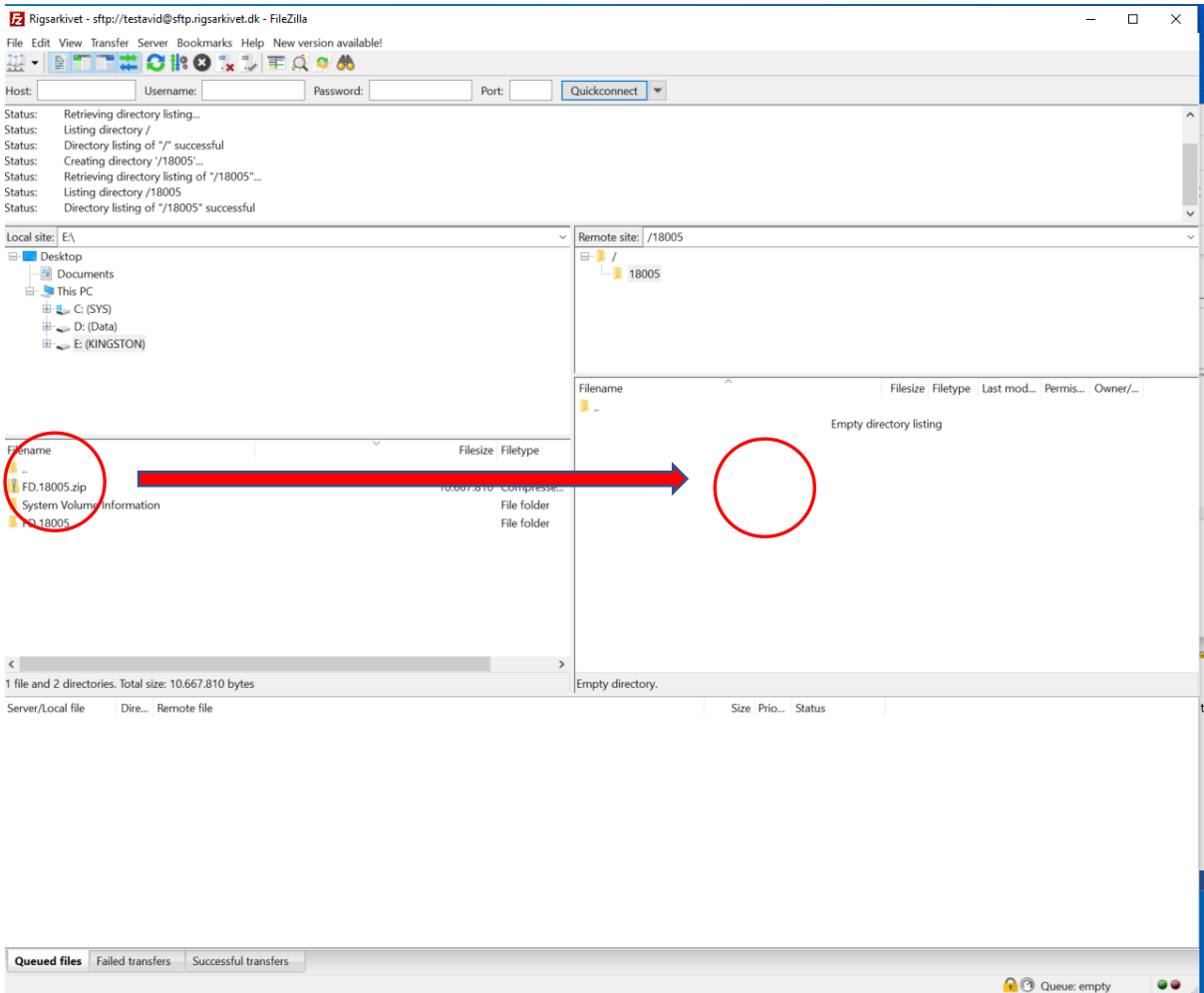
On the lower screen of the “Remote site”. Right click an empty space and drop down to “Create Directory”

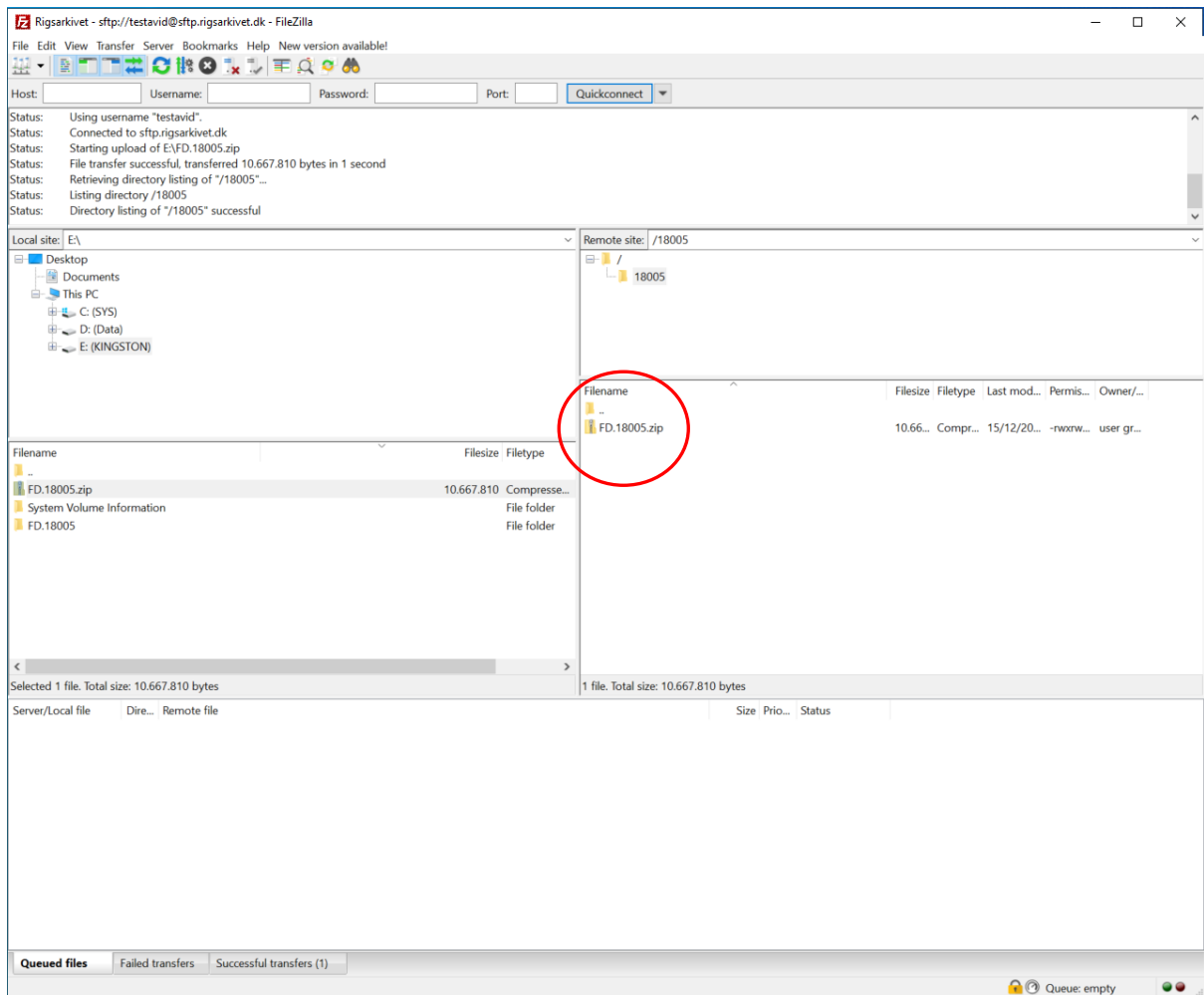


As prompted name it with the number of your information package

Double click on it to enter the directory.

Now from the "Local Site" screen drag your Information Package [FD.18005.zip] to the "remote site" screen. That is from left to right. The file will be transferred.





You can now Enter "CTRL +Q" to close the FileZilla application.

Appendix 2: Generating an MD5 sum

This procedure assumes you are using a Windows personal computer.

Firstly, click the windows start graphical interface at the bottom left hand of the screen.

Type in "command" and start a "Command Prompt".

Ensure you have access to the Information Package by issuing the command

"dir FD*"

Command Prompt

```
C:\tmp>dir FD*
Volume in drive C is SYS
Volume Serial Number is DEFF-2775

Directory of C:\tmp

15/12/2023  13.18          10.667.810  FD.18005.zip
              1 File(s)        10.667.810 bytes
              0 Dir(s)   87.084.843.008 bytes free

C:\tmp>
```

Note that the file should be password protected at this stage

Now calculate a MD5 sum for this file using the "certutil" utility using the command
certutil -hashfile <filename> MD5

Command Prompt

```
C:\tmp>dir FD*
Volume in drive C is SYS
Volume Serial Number is DEFF-2775

Directory of C:\tmp

15/12/2023  13.18          10.667.810  FD.18005.zip
              1 File(s)        10.667.810 bytes
              0 Dir(s)   87.084.843.008 bytes free

C:\tmp>certutil -hashfile FD.18005.zip MD5
MD5 hash of FD.18005.zip:
8f2ab9f3b8b7875bcd1d4e6973d2c7b4
CertUtil: -hashfile command completed successfully.

C:\tmp>
```

Note the value of the MD5 sum and use it in your communication to Rigsarkivet support